

**TOXICITY OF CADMIUM: A COMPARATIVE STUDY IN THE
AIR BREATHING FISH, *CLARIAS BATRACHUS* AND IN
NON-AIR BREATHING ONE, *CTENOPHARYNGODON IDELLUS***

P.K. Joshi
Head of the Department, Dept. of Zoology
Govt. P. G. College. MHOW
Dist.Indore (M.P.) INDIA
Phone-91-0731-478204
E-mail – PRAMOD772000@yahoo.com

Manjushree Bose
Ram Rahim Colony RAU
Dist.Indore (M.P.) INDIA
Phone-91-0731-856219
E-mail - manjushree_bose@rediffmail.com

Abstract

Heavy metals and their salts constitute a very important group of environmental pollutants since they are potent metabolic inhibitors. The inherent toxicity of a metal depends upon its capacity to disturb the dynamic life processes in biological system by combining with cell organelles, macromolecules and metabolites. Cadmium is considered as non-essential element. This study was performed to begin an assessment of effect of the heavy metal on biochemistry of blood serum because blood is a good patho-physiological indicator. Test animals used for the study were *Clarias batrachus* and *Ctenopharyngodon idellus*. Both the fishes responded differently to the same toxicant and for same duration of time. In *Clarias* there was a decrease in glucose, cholesterol, total protein, urea and creatinine value. While in *Ctenopharyngodon* only glucose and sodium showed a decrease but all the other parameters showed elevation in values. After studying the result of present work it is clear that Cadmium very much affects the energy metabolism, which in long term cause the death of the individual organism and affects the whole community.

Introduction

It is now well realized that environmental problems have increased exponentially in recent decades mainly because of rapid growth in human population and increased demand for several household materials. While on one hand technological development has improved the quality of life, on the

other hand it has created a number of health hazards. The toxic chemicals discharged into air, water and soil get into food chain from the environment. By entering into the biological system they disturb the biochemical processes leading to health abnormalities, in some cases to fetal consequences (Pratima Gupta, 1998). In 1975 U. S. Environmental Protection Agency (U S E P A), Occupational Safety and Health Administration (O S H A), Consumer Product Safety Commission (C P S C) listed 24 extremely hazardous substances. These include heavy metals also. One such important heavy metal is cadmium (Cd). Cadmium is a well-known cumulative poison in animals that belongs to group II b of the periodic table. Cadmium enters surface water with the discharge of industrial wastes or by leaching of soil, to which sewage sludge is added. It is biologically very reactive and therefore gives rise to both acute and chronic poisoning. Nariagu (1983) emphasized elaborately on effects of cadmium on aquatic organisms. Many reports are available on the effect of Cd on fish blood. Blood is a good bio indicator or a diagnostic tool to study the problem in organ function. The measurement of biochemical changes in blood of fish under exposure to any toxicant may be used to predict effects upon chronic exposure. Present work was a comparative study with a siluroid air-breathing catfish *Clarias batrachus* and a cyprinoids non air-breathing fish *Ctenopharyngodon idellus* under sub lethal Cd intoxication. Effects were studied on some serum biochemical parameters.

Materials and Methods

Live and healthy *Clarias batrachus* were purchased from local fish market and *Ctenopharyngodon idellus* were collected from the pond of village Santer near MHOW. Fishes were checked for injury and disease, and then washed in .1% KMnO₄ solution for 5 minutes. After acclimation of 15 days, 42 fishes of each category were selected for experiment, irrespective of their sex. The average length and weight of *Clarias batrachus* was 17⁺- cm. and 100⁺- gm. The average length of *Ctenopharyngodon idellus* was 14⁺- cm. and weight 100⁺- gm. Prior to experiment toxicity tests were conducted to determine the LC₅₀ and safe concentration values of CdCl₂ for 96 hours. The physico-chemical analysis of water was done according to Standard Methods published by A.P.H.A. (1992). Both the fishes were divided into 4 equal groups of 6 fishes each. First 3 groups of both the fishes were maintained in sub lethal concentration of CdCl₂ separately for 96 hours, 15 days and 30 days. Sub lethal concentration of CdCl₂ for *Clarias batrachus* was 2.5 ppm. and for *Ctenopharyngodon idellus* was 2.0 ppm. Fourth groups were served as control for respective groups. All control and treated fishes were fed once daily during the tenure of experiment. Both control and treated fishes were sacrificed at time intervals and blood was collected by severing the caudal peduncle using a sharp knife. Serum was separated from

the formed elements through the centrifugation at 3000 rpm. for 15 minutes. Seven biochemical parameters were analyzed in serum, are:

1. Glucose (mg/100 ml) - GOD POD method of Trinder.
2. Cholesterol (mgm/dl) - CHOD PAD method of R. Kettermann.
3. Urea (mg%) - DAM method of D. R. Wybenga.
4. Total Protein (gm%) - Biuret method of T. E. Welchbaum.
5. Creatinine (mg/dl) - Jaffs method of H. P. Seilig and H. West
6. Sodium (mMol/li) - Flame Photometry method of John D. Baur.
7. Potassium (mMol/li) - Flame Photometry method of John D. Baur.

Results

During the course of experiments no mortality were recorded in both the types of fishes exposed to sub lethal concentration of Cadmium chloride. Certain changes were observed in the coloration, feeding behavior and activeness of the fishes. Both the types of fishes initially became more active but later their activity ceases. In both the types of fishes coloration fades a little, fluctuating responses were observed in feeding behavior. Table 1. shows the biochemical indices recorded from exposing *Clarias batrachus* to 2.5 ppm Cadmium chloride for 96 hours, 15 days and 30 days. Differences were measured against the control values determined under controlled laboratory conditions. The value of glucose shows a gradual fall of 54%, cholesterol, total protein, creatinine, urea and potassium values show a regular increase while sodium levels show an initial increase of 11% but at the end of experiment it lowers to .7%.

Table 1. Serum biochemical data of the *Clarias batrachus* exposed to Cadmium chloride (2.5 ppm).

SNO	PARAMETER	Control	96 hrs	15 days	30 days
1	Glucose	47.0	32.3	27.4	21.4
2	Cholesterol	170.0	185.0	192.0	209.0
3	Total protein	4.0	4.2	4.2	5.4
4	Urea	16.300	16.500	17.100	18.400
5	Creatinine	0.200	0.300	0.400	0.500
6	Sodium	134.000	149.000	138.000	133.000
7	Potassium	6.000	7.100	8.100	8.500

Ctenopharyngodon idellus responded slightly different from *Clarias batrachus*. (Table 2.) In this fish all the parameters gave fluctuating results. Glucose level initially increases up to 29% but later it decreases lower than normal level. Cholesterol, urea and creatinine had a regular decrease up to 66%. Total protein value increases 14% up to 15 days then it lowers to

normal in 30 days, while sodium and potassium levels gradually elevated during the total period of experiment.

Table 2. Serum biochemical data of the *Ctenopharyngodon idellus* exposed to Cadmium chloride (2.0 ppm).

SNO	PARAMETER	Control	96 hrs	15 days	30 days
1	Glucose	66.6	86.0	72.0	60.0
2	Cholesterol	266.6	210.0	170.0	104.7
3	Total protein	7.0	7.5	8.0	7.0
4	Urea	20.600	20.500	18.300	15.200
5	Creatinine	0.900	0.600	0.500	0.300
6	Sodium	112.600	120.000	124.000	129.000
7	Potassium	9.200	9.800	10.200	11.200

Discussion

Heavy metals are widely distributed in free water sources and are harmful to aquatic fauna. Biochemical parameters are the best indicators of stress situations caused by heavy metals. In *Clarias* there was a decrease in glucose value. Cadmium like heavy metals have affinity for ligands like phosphate, cystenyle and histidyl side chains of proteins, can bind with carrier protein molecules resulting in inhibition of sugar and amino acid transport (Alvarado, 1966). According to Passov et al., (1966) metal ions block the active absorption of glucose by the intestinal epithelial cells. Many other workers reported hypoglycemic condition in air breathing fishes due to contaminants (Kurde1990, Sastry 1984). This may be to cope with high-energy demand in stress situations. *Clarias* is more active than *Ctenopharyngodon*, toxicity tests showed that cadmium is more toxic to non-air breathing fishes. (Figure 1) In glucose levels of *Ctenopharyngodon*, showed initial increase and then a decrease. It may be due to liver impairment to utilize glucose for glycogenolysis (Shastry and Sunita, 1982). Such a situation may be attributed to higher activities of enzymes participating in gluconeogenetic mechanisms, since enzymes of gluconeogenesis are reported to be induced by various toxicants (Shaikh and Hiradhar, 1985).

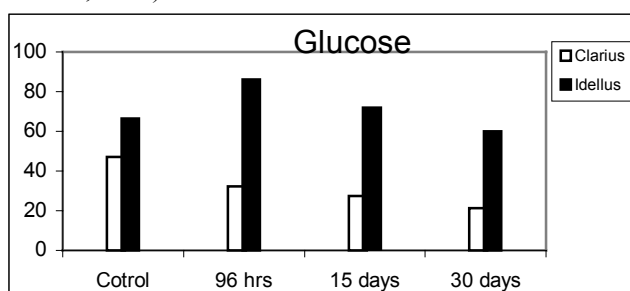


Figure 1. Alterations in blood glucose levels in both the fishes.

Clarias batrachus showed increase in cholesterol value while a slow decrease was observed in *Ctenopharyngodon*. (Figure 2) According to (Kurde, 1990) 60 – 80 % of total serum cholesterol is in esterified form & esterification occurs mainly in liver. Cadmium damages the liver, proportion of esterified cholesterol decreases. Hyper cholestolemia observed in *Clarias* it may be due to impairment of liver and inhibition of enzymes, which converts cholesterol into bile acid (Murrey 1990). Reduced lipoprotein lipase activity plays a role in the increment of plasma lipid (Asha Agrawal and Poonam Sharma, 1999).

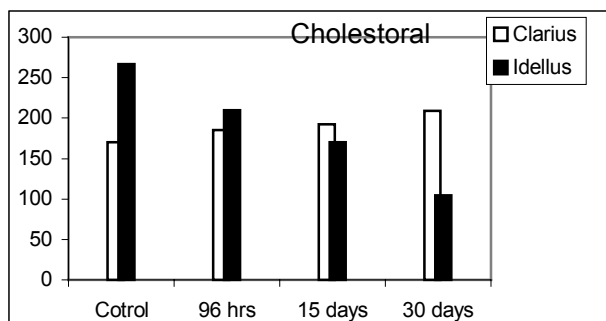


Figure 2. Changes in serum cholesterol level.

Proteins play a vital role in physiology of living organisms. All biological activities are regulated by enzymes and hormones, which are also proteins. Assessment of protein content can be considered as a diagnostic tool to determine the physiological phases of the cells. (Kapila Manoj 1999) Cadmium competes with Zn for the same sulphhydryl group and binds more firmly. Proteins are too sensitive and early indicators of heavy metal poisoning. Kapila Manoj, 1999 & Kurde, 1990 observed elevation in protein content of rat serum due to textile mill effluents. B.Rajanna et al., (1981) reported enhancement in protein content due to cadmium. (Figure 3) The increase in protein content was due to enhancement of microsomal protein synthesis suggested by many workers. Kidney is the target organ of cadmium poisoning.

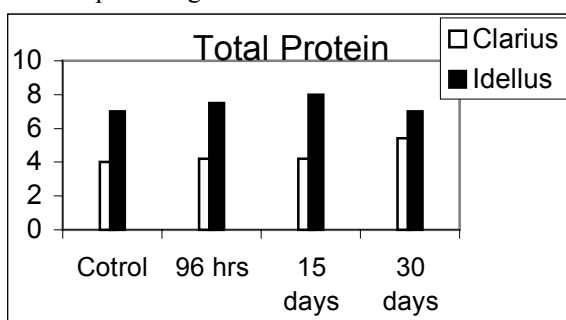


Figure 3. Changes in serum total protein level.

Teleost fishes are primarily amminotelic but their blood contains significant amount of urea and indeed in some teleosts it may account for 20 % or more of the total nitrogen excreted. Occurrence of uremia was reported by many workers (Gupta and Bhargava 1985, Kurde 1990). Renal disorders also

elevate serum urea values. The level of urea was influenced by protein content of diet.

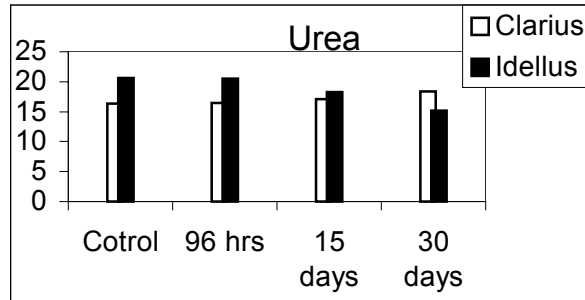


Figure 4. Changes in serum urea levels.

A high protein diet raises the serum urea and low protein diet lowers it. (Figure 4) *Clarias* is an active fish in stress condition it shows higher activity while *Ctenopharyngodon* become sluggish and doesn't show more activity, this type of expression in serum urea level was may be due to their feeding habits. Creatinine is another nitrogenous waste product that is eliminated by the kidneys, when excretion is suppressed in renal insufficiency. The value is unaffected by protein intake. According to Lall et.al., (1997) rise in creatinine value is an indication of renal tubular damage due to cadmium-induced nephrotoxicity (Kazuo et al., 1980) Figure 5. Shows the regular increase in serum creatinine value in *Ctenopharyngodon* it proves that Cadmium is more nephrotoxic to non-air breathing fishes.

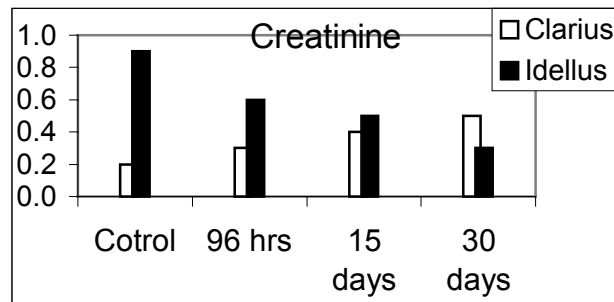


Figure 5. Alterations in serum creatinine value.

Minerals are mainly responsible for the maintenance of osmotic pressure in blood and proper function of all types of tissues. (Mohanty & Mishra 1983). The presences of activator ions of alkali metal series (Na^+ , K^+) are essential

for activity of many enzymes. Toxic metals can alter the concentration of electrolytes in blood. ATP and its related systems have been documented well to participate in several metabolic processes. $\text{Na}^+ - \text{K}^+$ ATPase, located in the cell membrane, has been implicated in the active transport of Na^+ and K^+ across the cell membrane (B.Rajanna et al., 1981); changes in the levels of plasma ions in present study were due to gill damage and inhibition of

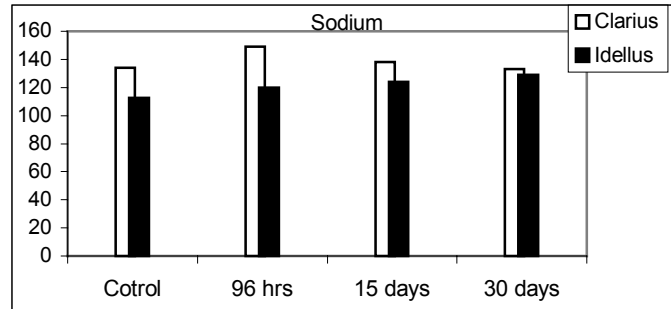


Figure 6. Changes in blood sodium level.

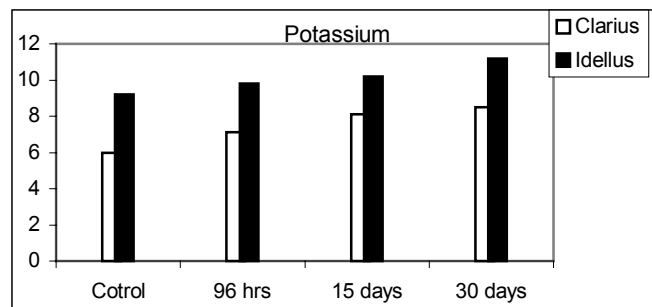


Figure 7. Changes in blood potassium level.

enzyme activity. Woodling (1999) suggested that plasma ion decrease or increase is due to kidney damage and altered enzyme activity and it has been an indicator of impending death. Changes in the value of sodium in both the fishes may be due to the structural difference in gills and tolerance to toxicant. Through reviewing the available literature it may be due to lateral line imbalance and hormonal disorder by affected endocrine organs through heavy metals.

Conclusion

After the above discussion it had been concluded that heavy metals causes deleterious effects on fishes and very much alters the biochemical characteristic of blood. In sub lethal concentration it may not be fatal for an individual organism but it does affect the growth rate and reproduction resulting in disturbance to whole community and trophic levels of food chains, ultimately the ecosystem.

References

- Alvarado, F.1966. Transport of sugars and amino acids in the intestine. evidences for a common carrier. *Science*.151: 1011-1012.
- A.P.H.A., A.W.W.A.and W.P.C.F. 1970. Standard methods for the examination of water and wastewater. 18th Ed. American Public Health Association. Washington.
- Asha Agrawal and Poonam Sharma. 1999. Effect of sulphur dioxide on total lipid and cholesterol level in the blood of albino rats. *Journal of Environ.Biol*.20 (4). 335-338.
- Gupta, R.C. and S. Bhargava. 1985. *Practical Biochemistry*. CBS Publishers And Distributors, Delhi (India).
- Gupta Pratima. 1998. Cadmium toxicity and thyroid function with special reference to 5'-monodeiodinase enzyme activity a comparative study in birds and mammal. Ph.D. Thesis.
- Kapila Manoj and G.Raghothaman. 1999. Mercury, copper and cadmium induced changes in the total protein level muscle tissue of an edible estuarine fish *Boleophthalmus dessoimieri*. *Cuv.J.Envi. Biol*.20 (3), 231-234.
- Kazuo T.Suzuki, Mitsuru Yamamura, Yasuko K. Yamada and Fujio Shimizu. 1980. Decreased copper content in rat kidney Metallothionine and its relation to acute cadmium toxicity. *Toxicology Letters*, 7.137-142.
- Kurde Sushama.1990. Effect of textile mill effluents and dyes on the hematological parameters in albino rats. Ph.D.Thesis.
- Lall, S.B., N.Das, R.Rama, S.S.Peshin, S.Khatter, K.Gulati and S.D.Seth. 1997. Cadmium induced nephrotoxicity in rats. *Indian. J. Exp. Biol*. Vol 35, pp 151-154.

- Mohanty, B.K. and B.N.Mishra. 1983. Effect of mercurial drug (Kajyoli) on Albino rat blood. *J.Envi.Biol.* 4 (4) 201-206.
- Murray, R.K. 1991. *Harpers Biochemistry* 22nd edition Prentice Hall International Inc. pp-678.
- Nariagu, O.Jerome and John.B.Sprangu. 1983. Cadmium on the aquatic environment. Vol.9, A. Wietly Interscience Publication.
- Rajanna, B., K.D.Chapatwala, D.D.Vaishnav and D.Desai. 1981. Changes in ATPase activity in tissues of rat fed on cadmium. *J. Envi. Biol.* 2(1) 1-9.
- Sastry, K.V. and Sunita. 1983. Alterations in the intestinal absorption of Xylose induced by heavy metals in fresh water teleost fish *Channa punctatus*. *Poll.Res.* Vol. 2(2): 45-48.
- Sastry and Sunita. 1982. Effect of cadmium chromium on the intestinal absorption of glucose in snake head fish *Channa punctatus*. *Toxicology Letters*, 10.293-296.
- Shaikh, Y.A. and P.K.Hiradher. 1985. Fluoride induced changes in blood Glucose, tissue glycogen and succinate dehydrogenase (SDH) Activity in the mudskipper *Beleophthalmus dessumeiri*. *Proc. Symp. Assess. Envir. Pollu*, 93-99.
- Woodling, John. D. 1999. Physiological and weight changes of wild brown Trout inhabiting water with acutely toxic cadmium and zinc concentration : An in situ study. *Proc.of World Fish Convention*.

Acknowledgement

Authors wish to express their humble gratitude to Dr. Lokesh K. Agrawal for providing facilities for present work.